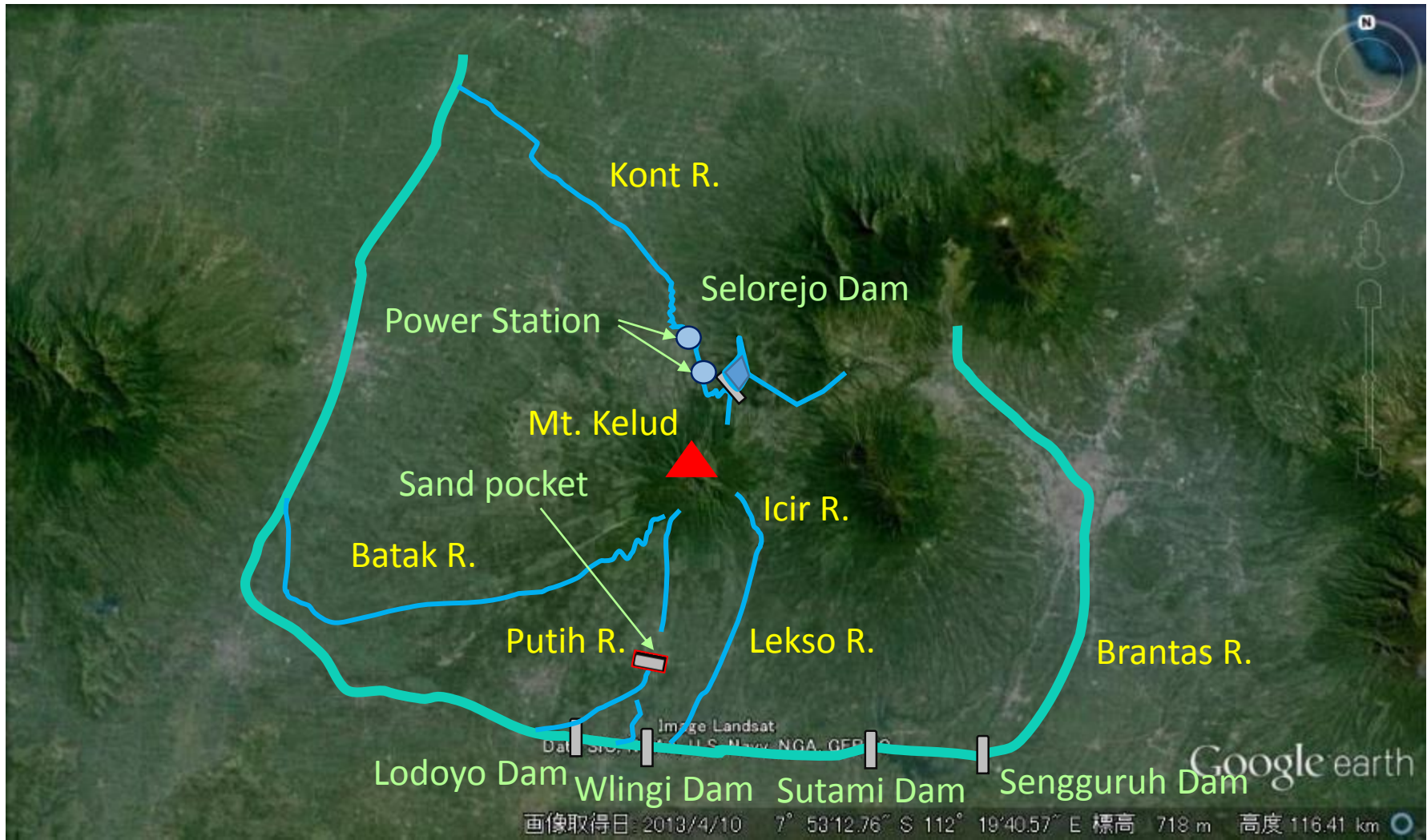


Field Investigation in the Brantas River Basin after Mt. Kelud Eruption 2014

April 20 – April 26, 2014

Masaharu Fujita, DPRI, Kyoto University



Mt. Kelud



2011/9/26

Before Eruption 2014 (2011/9/26)

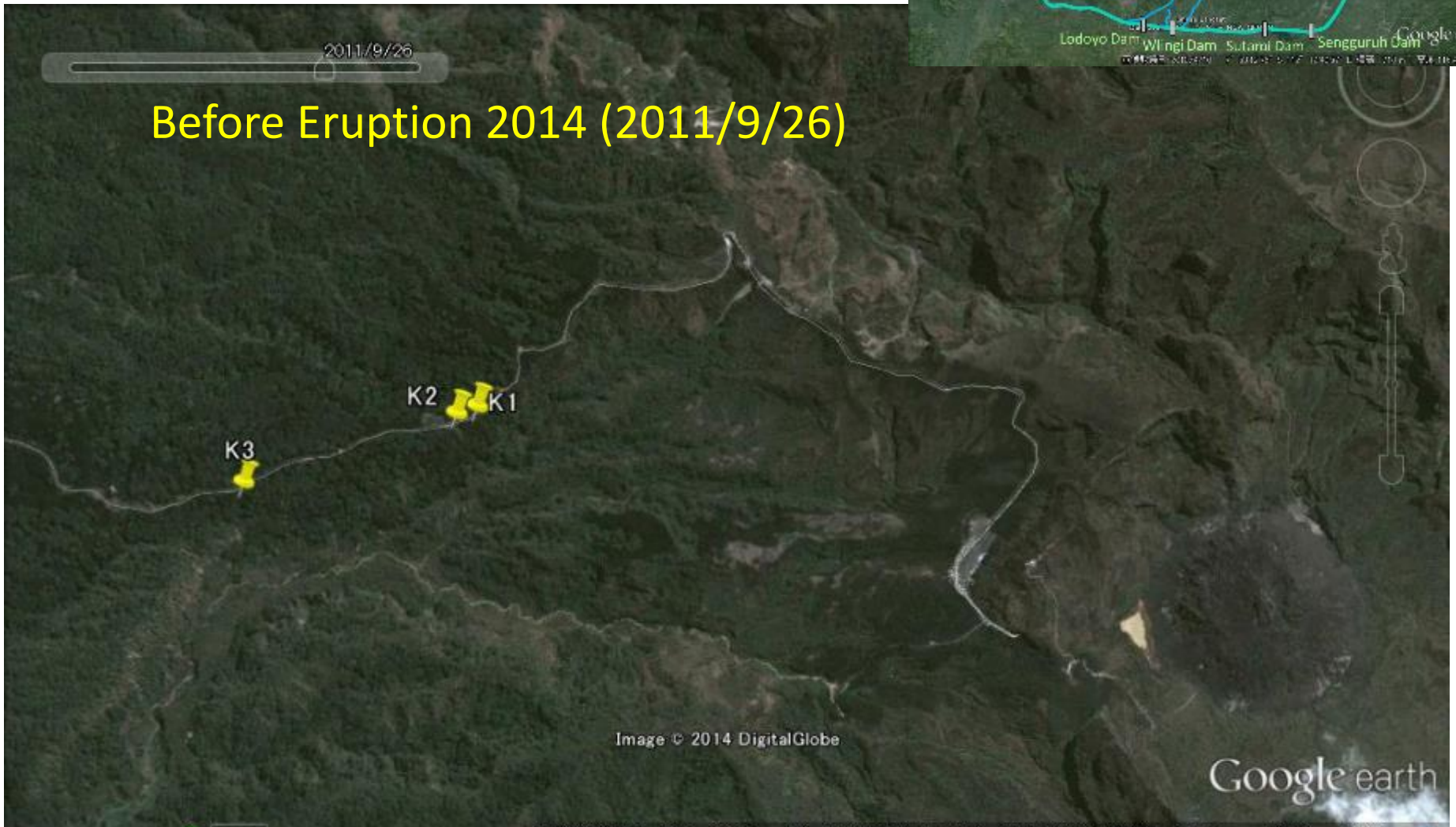
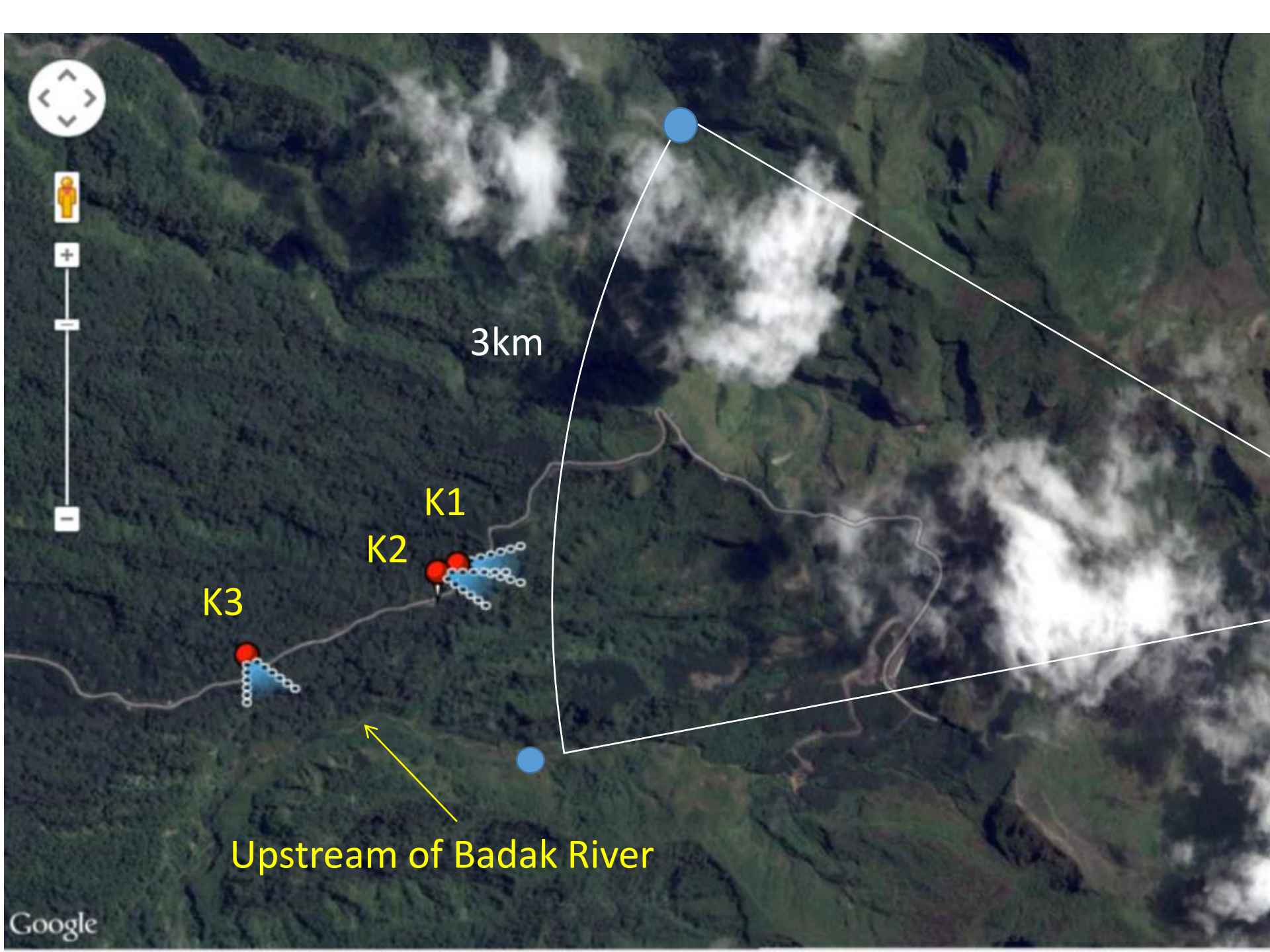


Image © 2014 DigitalGlobe

Google earth

2011

画像取得日: 2011/9/26 7° 56'05.29" S 112° 17'28.41" E 標高 1130 m 高度 450 km



3km

K1

K2

K3

Upstream of Badak River

At K1



At K2



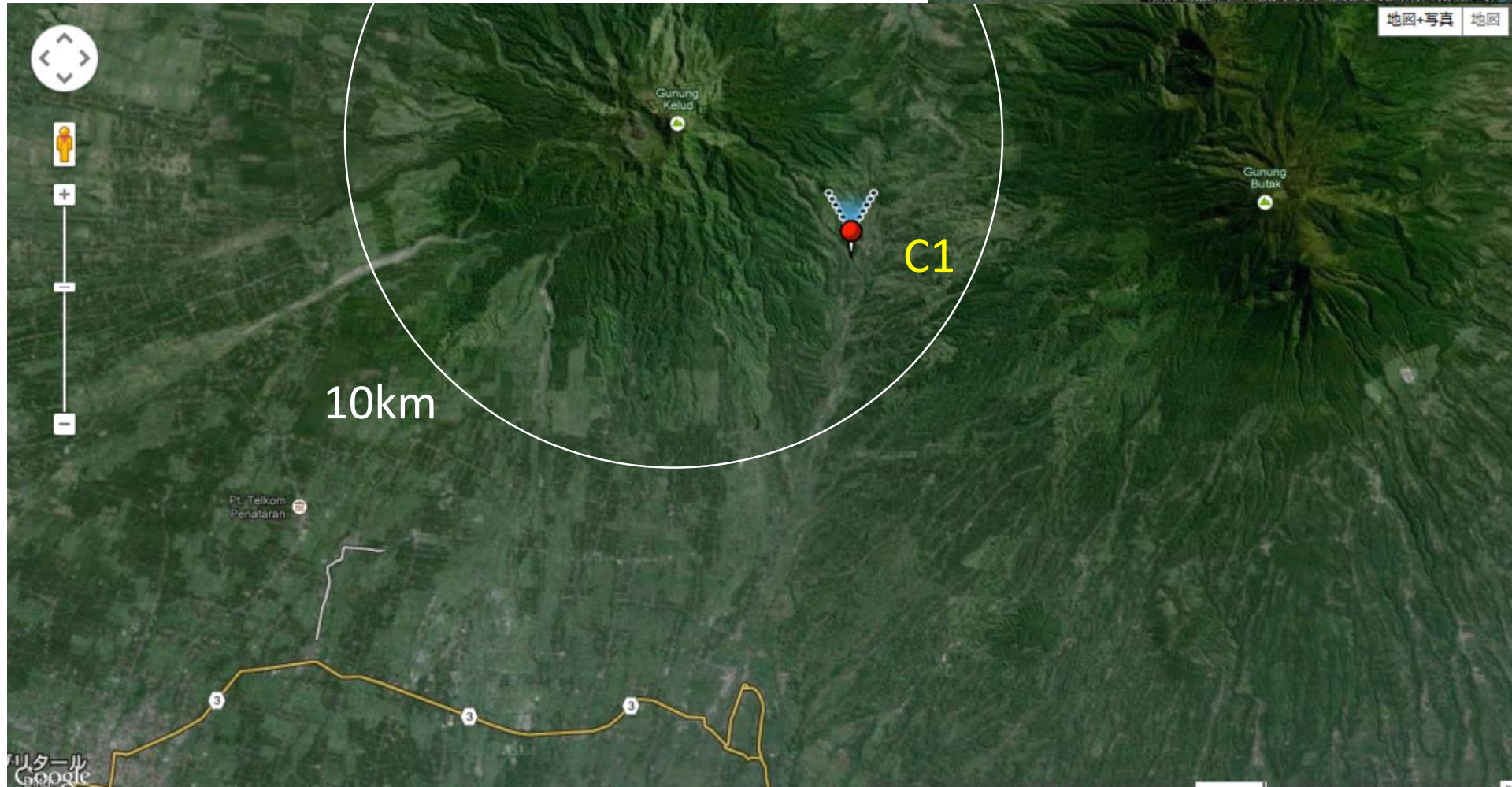
At K3



4 km downstream of the submit
Upstream of Badak River



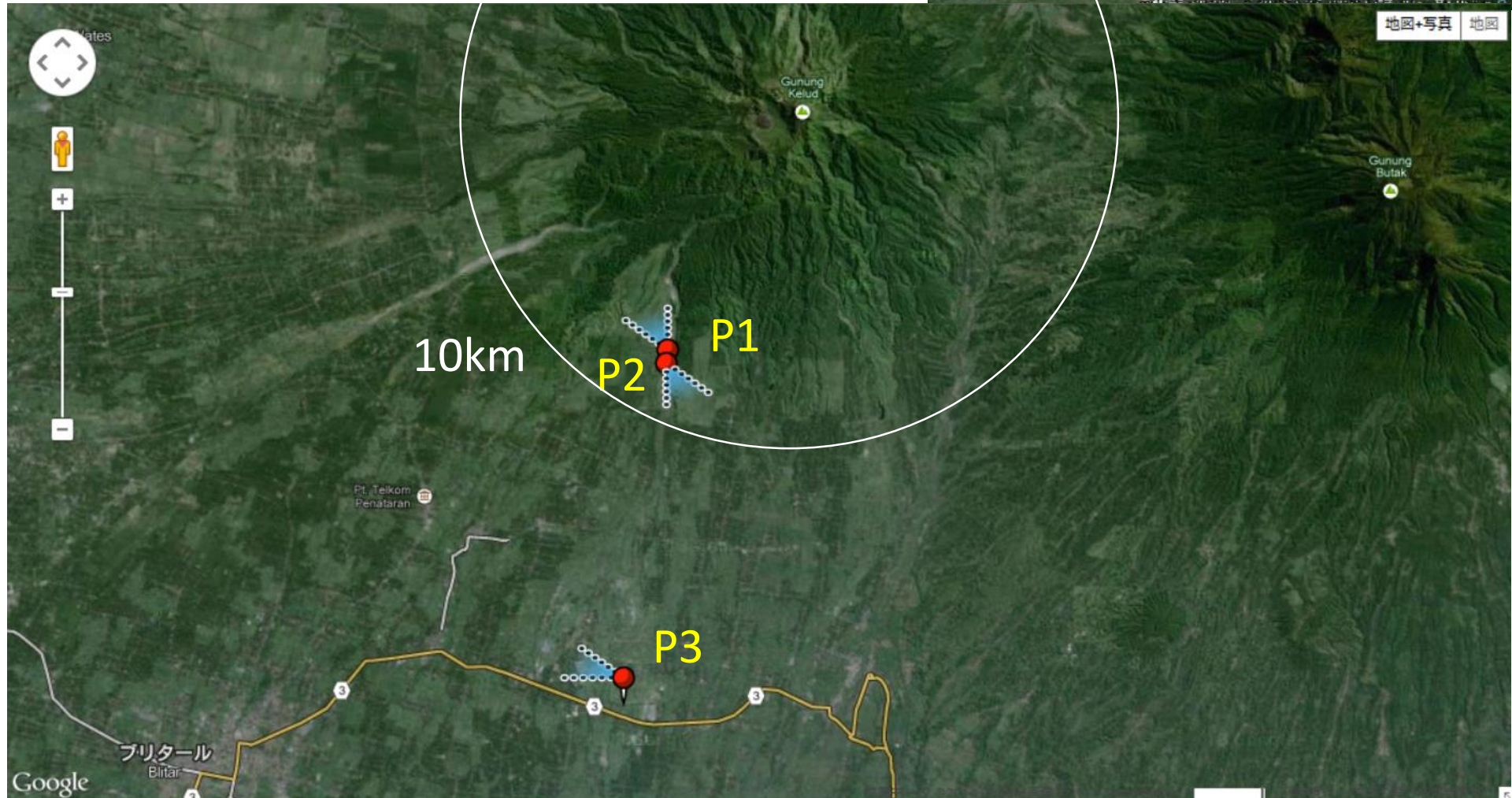
ICIRU River



At C1



Putih River



At P1



At P2



At P3

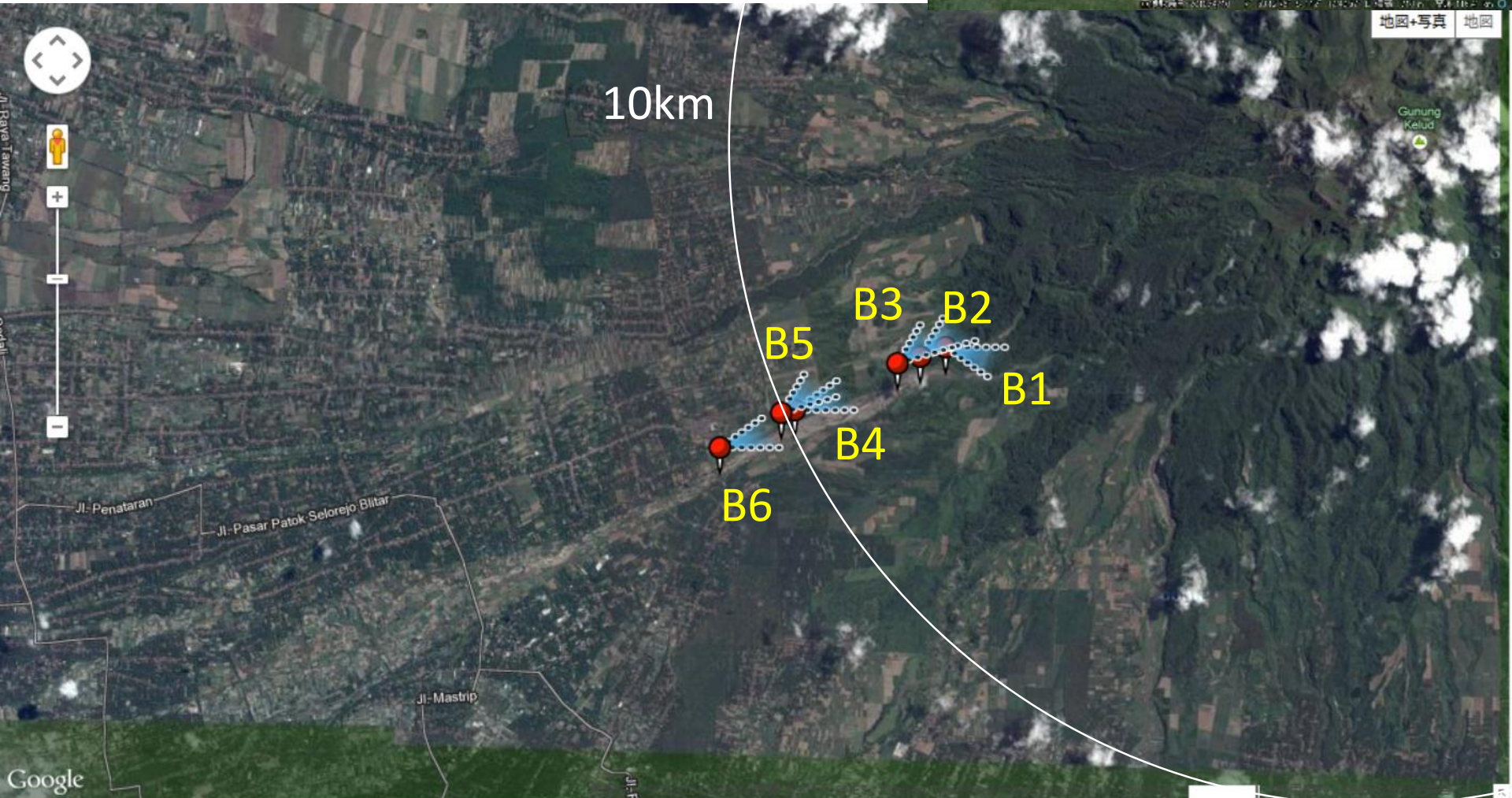


Diversion channel of Putih River





Badak River



At B1

Sediment has not come yet.



At B2

Sediment has not come yet.



At B3

Sediment has not come yet.



At B4



At B5

Sediment has not come yet.

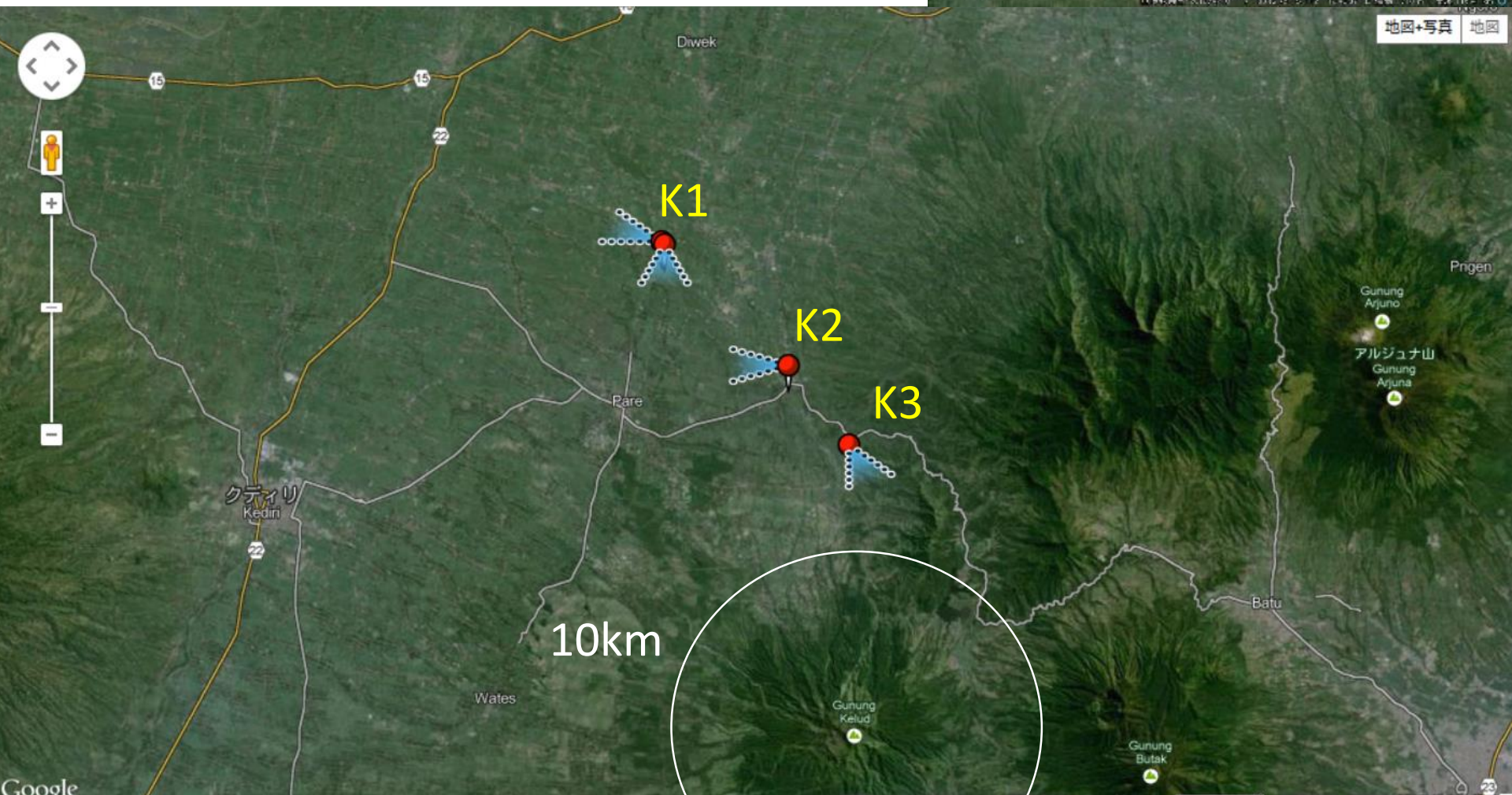


At B6

Sediment has not come yet.



Konto River



At K1



From K2



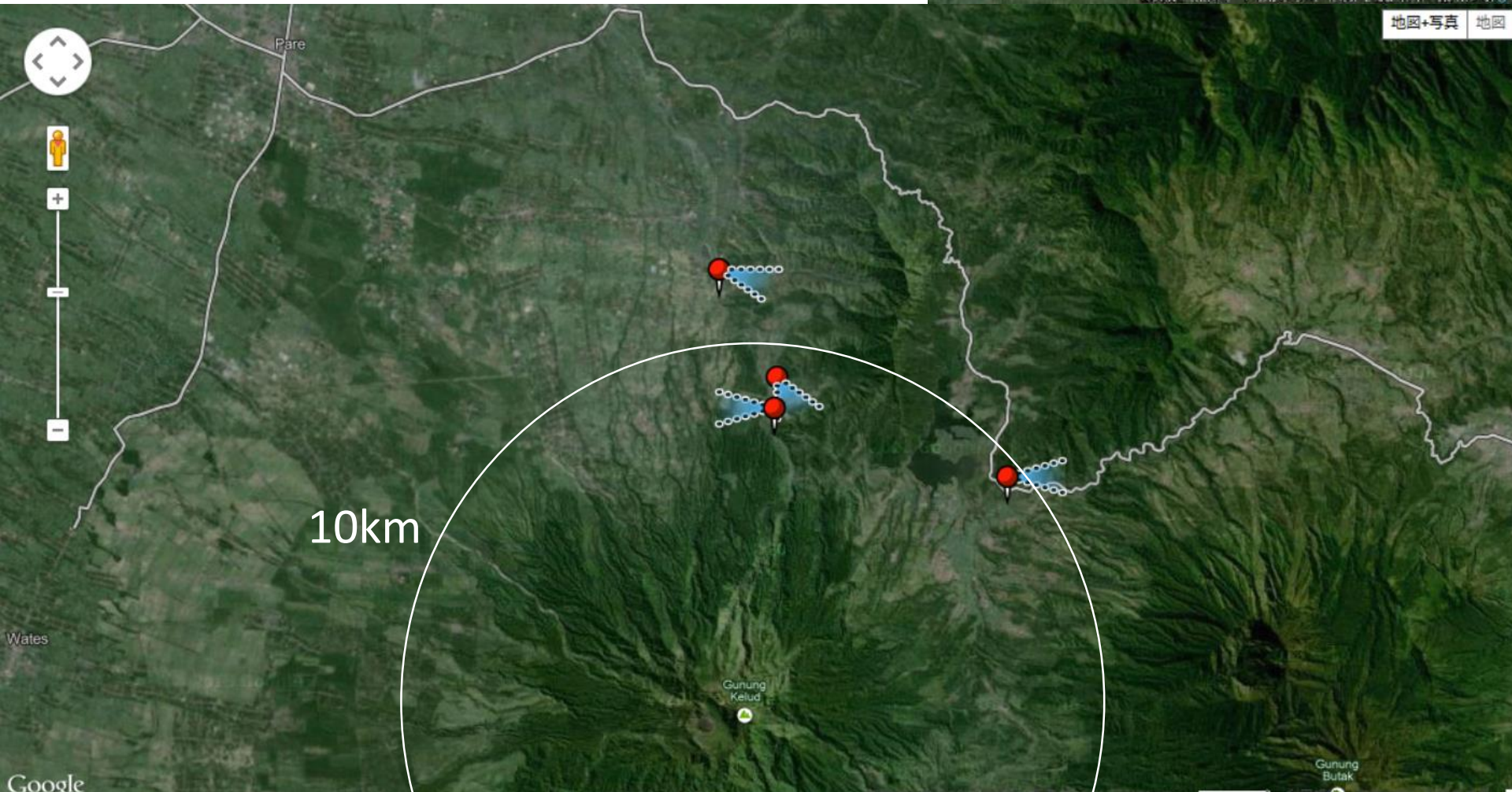
From K3



At K2



Konto River



At K4



At K5

Hydraulic Power Plant



At K6



At K7

